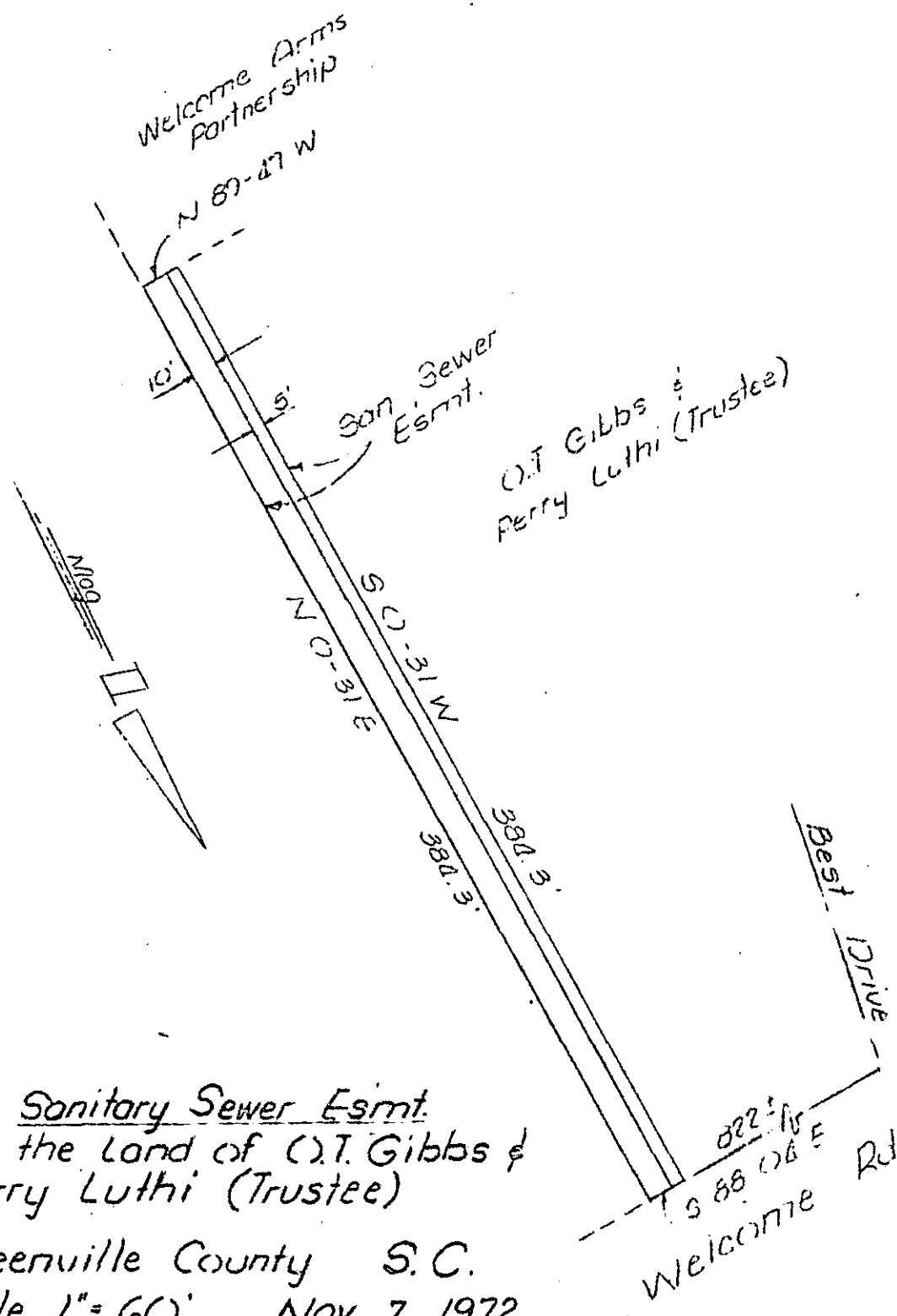


Note: This Drawing represents a E/W agreement agreed upon by designated parties & has not been surveyed by me.

RECORDED  
PAID \$ 100



FILED  
GREENVILLE, CO. S.C.  
NOV 15 4 03 PM '72  
ELIZABETH RIDDLE  
R.M.C.

Sanitary Sewer Easmt.  
(On the Land of O.T. Gibbs & Perry Luthi (Trustee))

Greenville County S.C.  
Scale 1" = 60' Nov. 7, 1972  
HW - 57 ✓

11607

NOV 15 1972

J.L. Montgomery, Jr.  
R.L.S. # 3552  
Simpsonville, S.C.